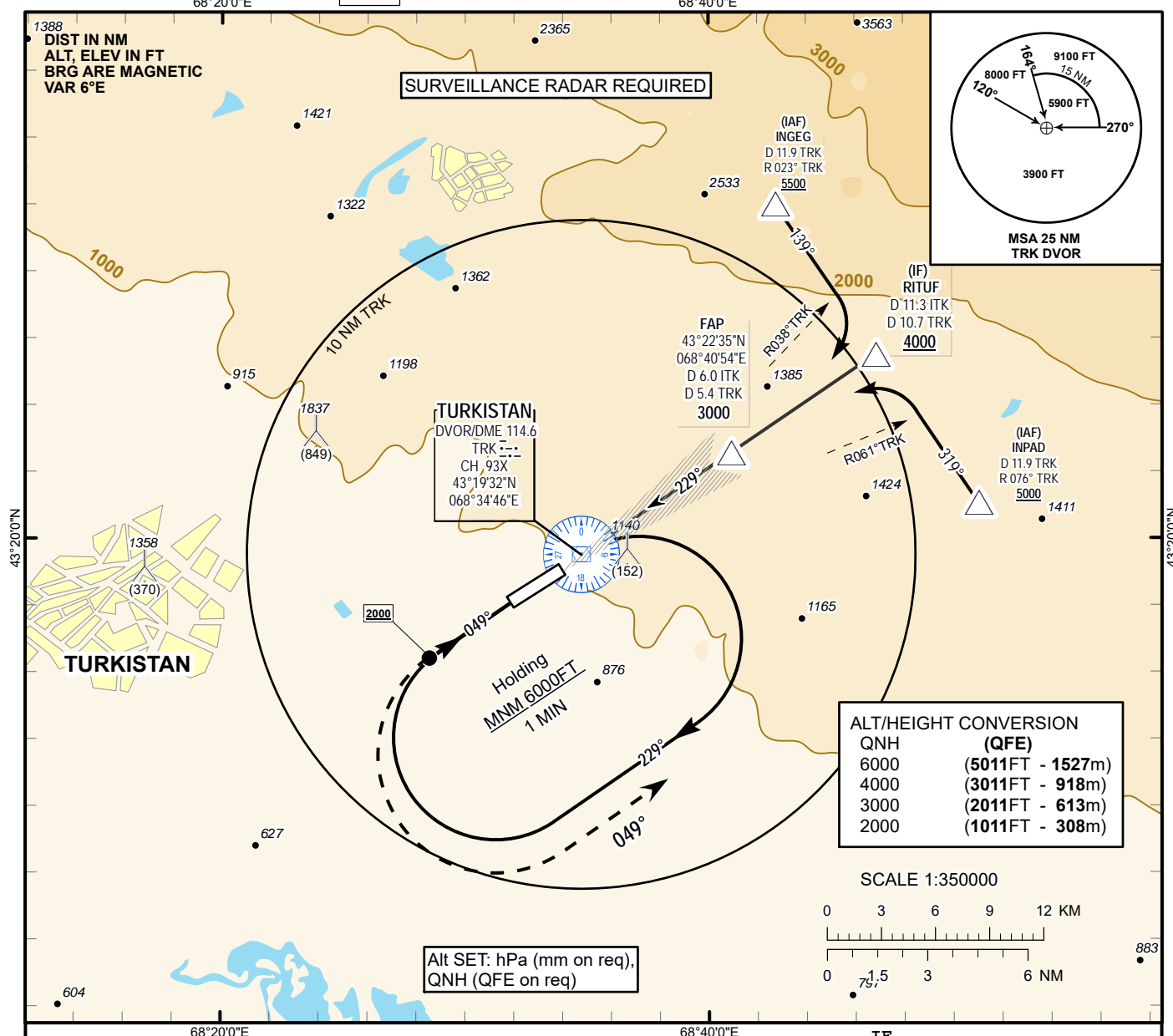


INSTRUMENT
APPROACH
CHART - ICAOILS
LLZ 111.3
ITK
GP 332.3
CH 50XAERODROME ELEV **989 FT**
HEIGHTS RELATED TO
THR RWY 23 - ELEV **989 FT**TURKISTAN TOWER 131.3
TURKISTAN ATIS (EN) 124.4
TURKISTAN ATIS (RU) 118.3TURKISTAN
ILS/DME Y
RWY 23

TRANSITION ALT 10000 FT

FAP
D 6.0 ITK
D 5.4 TRK
3000IF
RITUF
D 11.3 ITK
D 10.7 TRK
4000

MISSED APPROACH

Climb on track 229°,
at 2000 ft or above,
turn LEFT on track 049°
climbing to 5000 ft or above,
then as directed.
Missed approach turn
speed limited to
240 Kt IAS maximum.

ILS RDH 49

THR 23
ELEV 989 FT

Aircraft Category		A	B	C	D	DIST to THR DME ITK	NM	6.0	5.0	4.0	3.0	2.0	1.0
Straight-in Approach OCA/H	CAT I	1189(200)	1189(200)	1189(200)	1194(205)	DME TRK	NM	5.4	4.4	3.4	2.4	1.4	0.4
						ALTITUDE	FT	3000	2652	2325	2001	1678	1357
						HEIGHT	FT	2011	1663	1336	1012	689	368

DME ITK ZERO RANGED TO THR RWY 23

Aerodrome Operating Minima DH ft x RVR(CMV)													
	GS	Kt	80	100	120	140	160	180					
	Desc.Rate(5.2%)	ft/min	420	530	640	740	840	950					

CHANGE: Editorial.

TURKISTAN
ILS/DME Y RWY23

AERONAUTICAL DATA TABULATION

ILS approach to RWY23 from INPAD, INGEG, RITUF	
Fix/point	Coordinates
TRK DVOR/DME	43° 19' 32.3"N 068° 34' 46.1"E
RITUF (IF) D11.3 ITK, D10.7 TRK	43° 25' 33.4"N 068° 46' 54.4"E
(FAP) D6.0 ITK, D5.4 TRK	43° 22' 35.1"N 068° 40' 54.0"E
INGEG (IAF) R023°, D11.9 TRK	43° 30' 01.0"N 068° 42' 43.6"E
INPAD (IAF) R076°, D11.9 TRK	43°21'05.6"N 068°51'04.6"E
THR RWY23	43° 19' 10.27"N 068° 34' 01.98"E
ITK LLZ	43° 18' 00.6"N 068° 31' 42.1"E